

SCHOOL COMMITTEE MEETING

February 28, 2023



Newburyport Public Schools

Capital Improvement Overview

Capital Expense	FY24	FY25	FY26	FY27	FY28
NHS Elevator Controls	\$69,370.00				
NHS Roof	\$236,475.00	\$1,576,500.00	\$228,368.00	\$1,522,540.00	
Nock-Molin Gym & Auditorium Roof		\$177,443.00	\$1,182,950.00		
Pickup Truck with Utility Body	\$67,390.00				
NHS Security Upgrades	\$66,393.00	\$150,000.00	\$150,000.00	\$150,000.00	\$150,000.00
NHS Science Area Space Use Study	\$41,400.00	TBD	TBD	TBD	TBD
Nock-Molin and NHS Control Upgrade	\$160,000.00				
Engineering Services	\$50,000.00	TBD	TBD	TBD	TBD
NHS Library Carpet Replacement	\$31,875.00				
Nock-Molin Playground Repaving	\$78,500.00				
Nock-Molin Kitchen Equipment Replacement	\$15,000.00	\$15,000.00			
NHS Energy Reduction Projects	\$100,000.00		\$100,000.00		\$100,000.00
NHS Integrated Arts Space Use Study	\$38,500.00	TBD	TBD	TBD	TBD
NHS College & Career Center Study	\$9,000.00	TBD	TBD		
Nock-Molin Sidewalk Repaving			\$15,000.00	\$18,000.00	
NHS Auditorium Plaster Repairs				\$100,000.00	
TOTAL	\$963,903.00	\$1,918,943.00	\$1,676,318.00	\$1,790,540.00	\$250,000.00
FY24 Non-CIP Funding	\$376,870.00				
FY24 CIP Request	\$587,033.00				

SCHOOL CHOICE OVERVIEW

BACKGROUND

Called Inter-District School Choice, these programs allow parents/guardians to enroll their children in communities other than the one in which they reside.

Established by Massachusetts G.L. c. 76, § 12B (established in 1991, amended in 1993)

Districts who open choice seats are called **receiving districts**

Districts who have students “choicing” into another district are called **sending districts**

RECEIVING DISTRICT PROCESS

District Reports Enrollment Information

- Capacity (how many students can be served)
- Projected Resident Enrollment
- Current Choice enrollment
- Number of seats available to non-residents

District Identifies Available Seats

- Superintendent recommends seat availability
- School Committee votes on open seat recommendation*

* A receiving district can withdraw from school choice only if a school committee holds a public hearing on this issue and then votes to withdraw from the school choice program prior to June 1st

District Enrolls Students

- School Choice openings are publicized
- Applications are accepted
- Slots are filled before July 1st using a lottery
- Parent/Guardians are notified
- Sending district is notified
- Student is enrolled

MOST DISTRICTS SEND STUDENTS, MANY LOCAL DISTRICTS RECEIVE STUDENTS

FY21 Massachusetts

Local Receiving Districts

Amesbury
Beverly
Georgetown
Gloucester

Hamilton-Wenham
Ipswich
Manchester-Essex
Masco

Peabody
Rockport
Salem
Triton

313
Sending
Districts

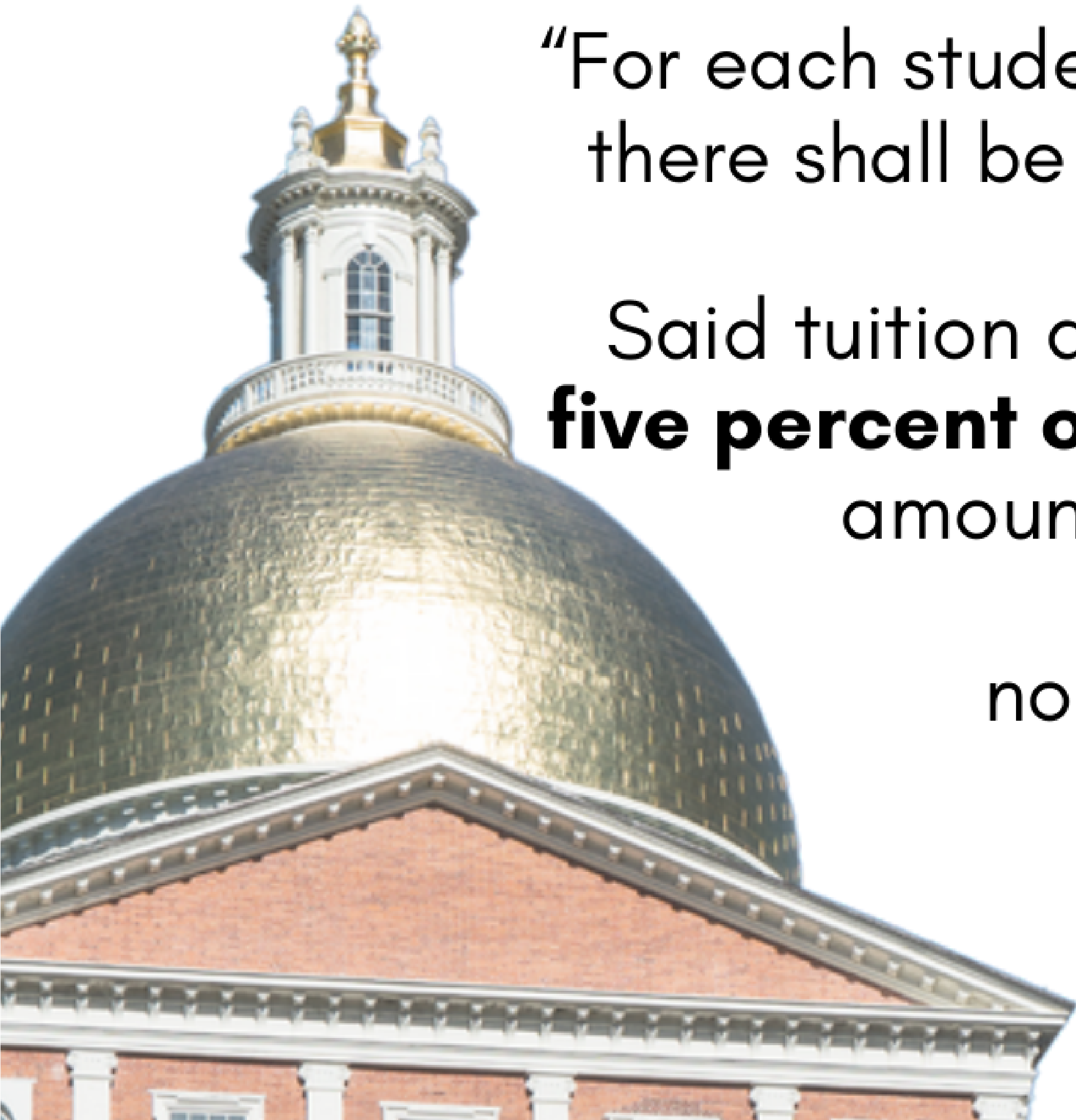
Receiving
Districts
188

TUITION RATE IS ESTABLISHED BY LAW

“For each student enrolling in a receiving district, there shall be a school choice tuition amount.

Said tuition amount shall be equal to **seventy-five percent of the actual per pupil spending** amount in the receiving district for such education as is required by such non-resident student, **but not more than five thousand** dollars”

G.L. c. 76, § 12B



TUITION AND SPECIAL CLASSIFICATIONS

	Student A	Student B	Student C	Student D
Educational Classification	No Special Classifications	Low Income or English Learner	Special Education In-district Services	Special Education Out-of-District Services
Tuition	\$5,000	\$5,000	\$5,000	None
Reimbursements	None	State aid funds are adjusted to reflect these students	Reimbursement of service expenses by sending district*	Full reimbursement of tuition/transportation by sending district*

* These amounts are determined using a cost calculator similar to the one used for the circuit breaker program under G.L. c. 71B, § 5B

SCHOOL CHOICE AND STATE AID*

Districts submit reports to DESE on sending and receiving students (including calculations for special education expenses).

Using the data from the districts, the state treasurer increases the **receiving district's** local aid (school choice receiving tuition).

The state treasurer deducts school choice tuition/expenses from the **sending district's** local aid.

* DESE Advisory on Inter-District School Choice

CHAPTER 70 AID BACKGROUND*

A **Foundational Budget** is determined based on grades, programs and demographics.

A **Target Local Contribution Share** is based on the city's property taxes and relative wealth of the community (property values, income, municipal revenue growth factor)

The remainder is funded by **Chapter 70 Aid**

Chapter 70 payments are made monthly as a part of the local aid

Charter Schools also receive Chapter 70 Aid. In FY23, River Valley Charter School receives about \$2.1 million of approximately \$4.6 million in Chapter 70 Aid allocated to Newburyport

ACCOUNTING AND EXPENDITURE

DESE Advisory on Financial Administration of School Choice

Accounting

“The municipal or district treasurer should transfer the amount received for school choice tuition revenue each month into a school choice revolving account.”

Oversight

“These funds are then available for expenditure by the school committee without further appropriation.”

Expenditures

“Allowable expenditures include any expenditures for staff, materials, equipment, or services that directly enhance the quality of a district's educational programs and benefit students who currently attend a district's schools”

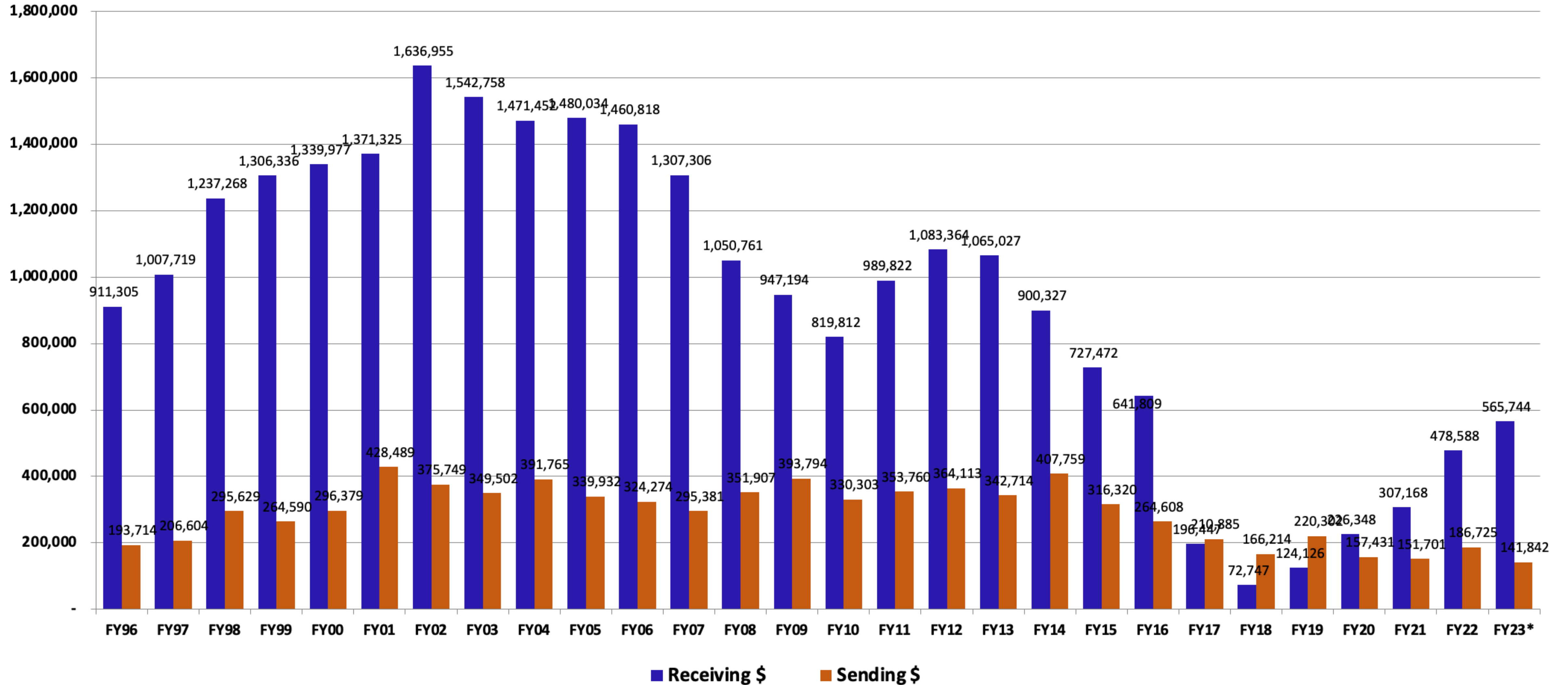
NPS SCHOOL CHOICE TRENDS

- Sending and Receiving Student Enrollment Numbers
- Sending and Receiving Funding Trends
- School Choice Revolving Account Trends

ENROLLMENT

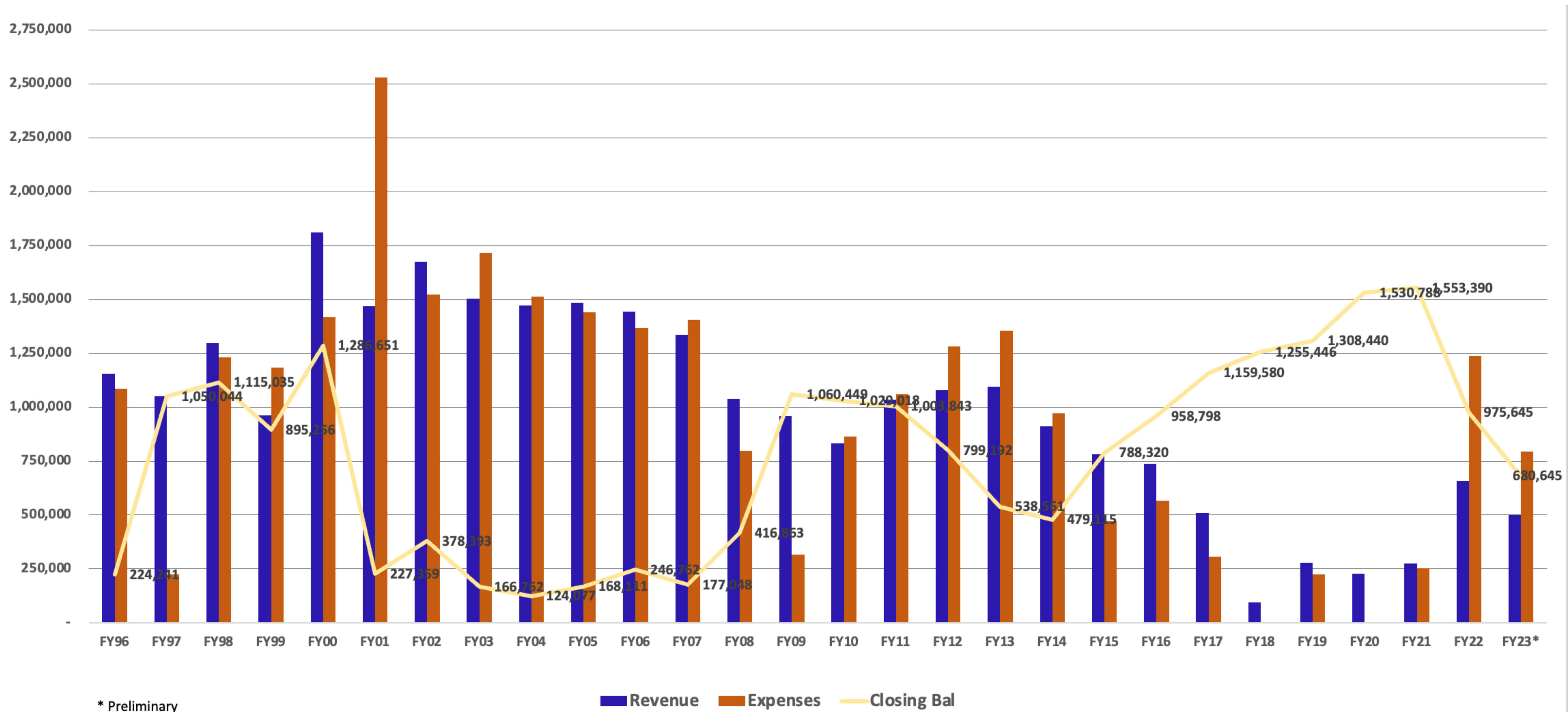
	Receiving		Sending	
FY	FTE Pupil	Tuition	FTE Pupil	Tuition
2018	8	72,747	26.9	166,214
2019	18.5	124,126	31.6	220,302
2020	34.9	226,348	24	157,431
2021	46.6	307,168	20.3	151,701
2022	66.9	478,588	26.1	186,725

FUNDING TRENDS



*Preliminary

REVENUE, EXPENSES, FUND BALANCES



* Preliminary

Revenue Expenses Closing Bal

CLOSING

Additional FAQs will also be posted on the School Committee website.

Can a school district establish a preference for the children of school district or other municipal employees when admitting students through school choice?

“No. A preference for admission on any basis other than for siblings is inconsistent with the random selection requirement in the statute. Outside of school choice, however, a school district may admit children of school district and municipal employees under G.L. c. 76, § 12.”